



Meridian Solar Farm

EN010169

Volume 6

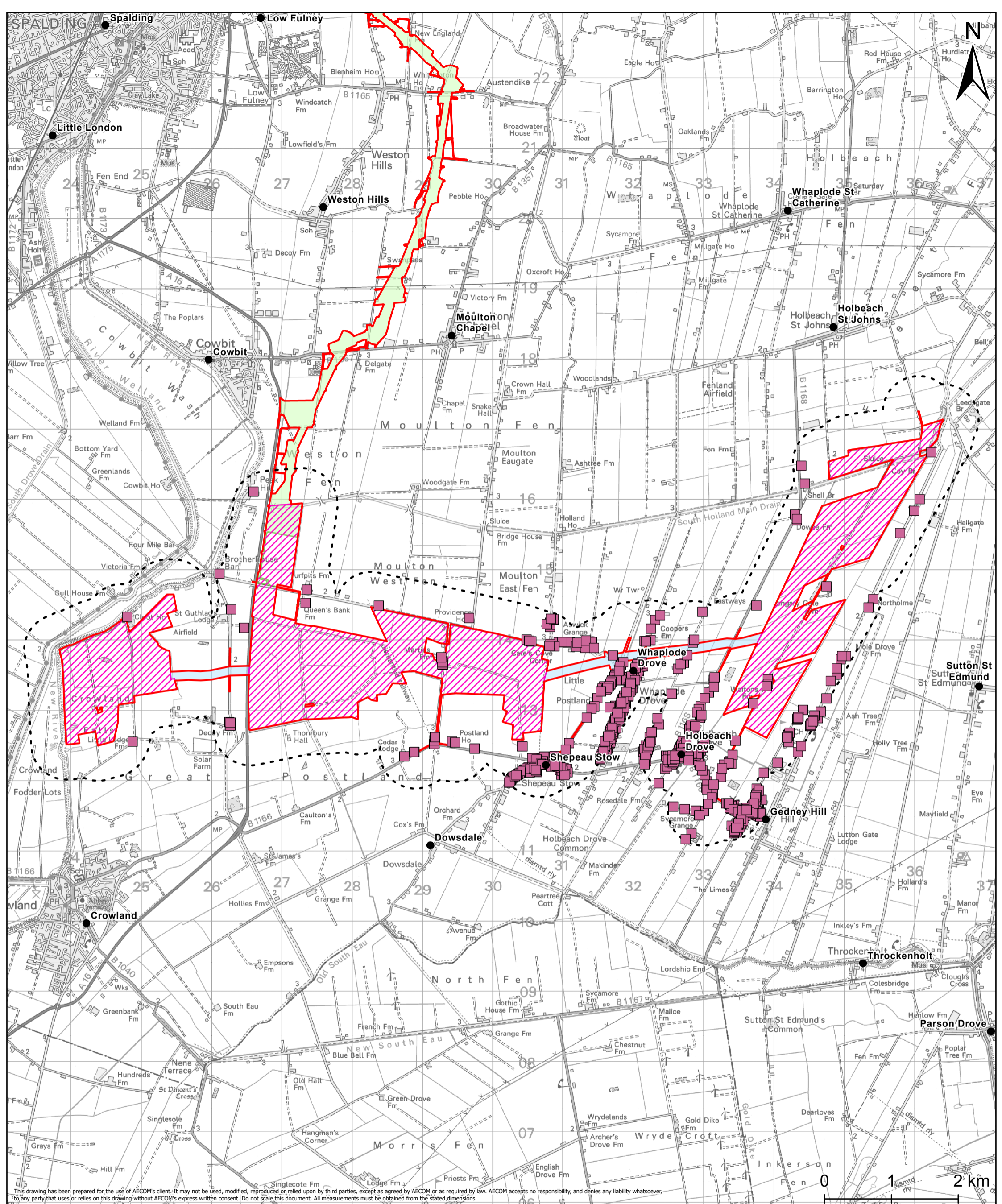
Environmental Statement

**6.2 ES Figure 14-1:
Residential Properties in
the Vicinity of the Solar
Development Area and
Inter-Array Connections**

APFP Regulation 5(2)(a)

Infrastructure Planning (Applications:
Prescribed Forms and Procedure)
Regulations 2009

March 2026



This drawing has been prepared for the use of AECOM's client. It may not be used, modified, reproduced or relied upon by third parties, except as agreed by AECOM or as required by law. AECOM accepts no responsibility, and denies any liability whatsoever, to any party that uses or relies on this drawing without AECOM's express written consent. Do not scale this document. All measurements must be obtained from the stated dimensions.

Project Title
Meridian Solar Farm

Map Title
Environmental Statement
Figure 14-1: Residential Properties
within a 500m Buffer of the Solar
Development Area and
Inter-Array Connections

- Legend**
- Order Limits
 - Solar Development Areas
 - Inter-Array Connections
 - Grid Connection Route
 - Solar Development Area & Inter-Array Connection - 500m Buffer
 - Residential Properties
 - Settlement

Date: 20/03/2026

Copyright
Contains OS data © Crown Copyright and database right 2026
Contains data from OS Zoomstack. Reproduced from Ordnance Survey digital map data © Crown copyright 2025. All rights reserved. Licence number AC000808122
© Local Government Information House Limited copyright and database rights 2025 AC000808122

Scale	Version	Drawn	Reviewed
1:48,000	0	LL	AK

